

Introduction to Holomorphic Dynamics

Winter 2021
Giulio Tiozzo

$$f_c(z) := z^2 + c$$

QUADRATIC FAMILY
LOGISTIC

$$c \in \mathbb{C} \setminus \mathbb{R}$$

$$f_c: \hat{\mathbb{C}} \rightarrow \hat{\mathbb{C}}$$

$$g_a(x) = a x (1 - x)$$

$a = \text{parameter}$

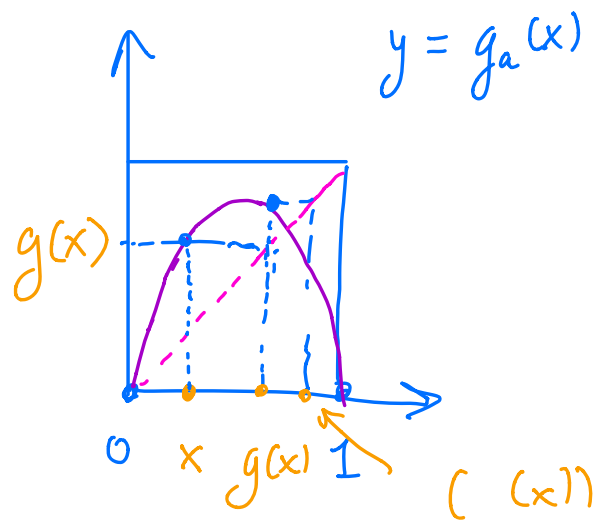
$$x \in [0, 1]$$

$x \in [0, 1]$ "initial condition"

$g_a(x)$ "state of system after
1 unit of time"

$g_a(g_a(x))$... 2 units of time

$g_a(g_a(g_a(x)))$... 3 units...



Def: A ^(DISCRETE-TIME) DYNAMICAL SYSTEM is
 a pair (X, T) , where
 X is a \dots space and
 $T: X \rightarrow X$ is a map
 from X to itself.

Def: $(x, T(x), T(T(x)), \dots, \overbrace{T \circ \dots \circ T}^n(x), \dots)$
 is the ORBIT of x under g

$$T^n(x) := \underbrace{T \circ T \circ \dots \circ T}_n(x) \quad \text{\underline{n}^{th} iterate}$$

E.g.: ① TOPOLOGICAL DYNAMICS

$X =$ topological space
 (compact?)

$T: X \rightarrow X$ continuous.

② MEASURABLE DYNAMICS

(X, \mathcal{A}, μ) = measure space

$T: X \rightarrow X$ measure-preserving

$$(T_*\mu = \mu)$$

$$T_*\mu(A) = \mu(T^{-1}A)$$

③ HOLOMORPHIC DYNAMICS

X = complex manifold (\mathbb{C})

$T: X \rightarrow X$ holomorphic map.

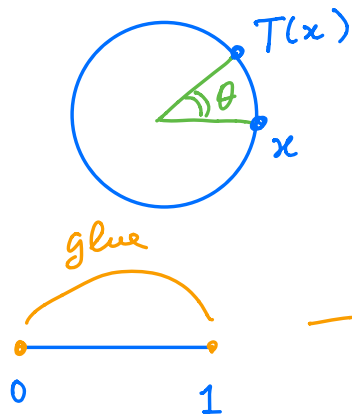
Basic Examples

① Rotations

$$X = S^1 \simeq \mathbb{R}/\mathbb{Z}$$

$T =$ Rotation
of angle θ

$$(\theta = 2\pi \alpha)$$

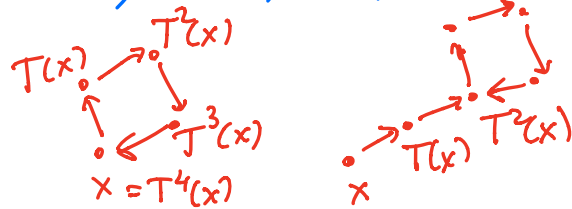


$$X = \mathbb{R}/\mathbb{Z}$$

$$T(x) = x + \alpha \pmod{1}$$

Denote $\mathcal{O}_T(x) = (x, T(x), \dots, T^n(x), \dots)$

$$\alpha = \frac{1}{5}$$



$$\mathcal{O}_T(x) = \left(x, x + \frac{1}{5}, x + \frac{2}{5}, x + \frac{3}{5}, x + \frac{4}{5}, \underset{x}{x+1} \right)$$

Def.: x is periodic for T if

$\mathcal{O}_T(x)$ is finite. It is

purely periodic if $\exists n \geq 1$ s.t. $T^n(x) = x$ and

eventually periodic otherwise

Note: the behaviour of $O_T(x)$ is the same for all x .

E.g.: $d = \frac{p}{q}$, $(p, q) = 1$

Then every x is periodic of period q .

What if $d \in \mathbb{R} \setminus \mathbb{Q}$?

No x is periodic.

Proof if $T^n(x) = T^m(x)$

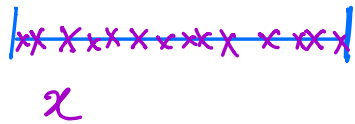
for $n > m$

$$x + n\alpha = x + m\alpha \pmod{1}$$

$$(n-m)\alpha = 0 \pmod{1}$$

$$\Rightarrow \alpha \in \mathbb{Q} \Rightarrow \text{contradiction}$$

Prop.: if $\alpha \in \mathbb{R} \setminus \mathbb{Q}$, then for any x
in $[0, 1)$, $\mathcal{O}_{T_\alpha}(x)$ is DENSE in
 $[0, 1)$.



FACT The orbit of x is
EQUIDISTRIBUTED along $[0, 1)$.

Rotation of irrational angle is
a QUASIPERIODIC system.

Example 2

Doubling Map

$$T(x) = 2x \pmod{1}$$

$$T: \mathbb{R}/\mathbb{Z} \rightarrow \mathbb{R}/\mathbb{Z}$$

PERIODIC POINTS for T

$$\frac{1}{2^n} \rightarrow \frac{1}{2^{n-1}} \rightarrow \dots \rightarrow \frac{1}{2} \rightarrow 0^g$$

$$\frac{1}{3} \rightarrow \frac{2}{3} \rightarrow \frac{4}{3} = \frac{1}{3}$$

purely
periodic
period 2

$$\frac{1}{5} \rightarrow \frac{2}{5} \rightarrow \frac{4}{5} \rightarrow \frac{3}{5} \rightarrow \frac{1}{5} \quad \text{period 4}$$

$$2^4 - 1 = 15 = 5 \cdot 3$$

period 3

$$\frac{1}{7} \rightarrow \frac{2}{7} \rightarrow \frac{4}{7} \rightarrow \frac{1}{7}$$

$$7 = 2^3 - 1$$

Fact Periodic Points for the doubling map are precisely the rationals .

Pf.: $T^n(x) = T^m(x) \quad n > m$

$$2^n x + p = 2^m x + q$$

$$(p, q \in \mathbb{Z})$$

$$(2^n - 2^m)x = q - p$$

$$x = \frac{q - p}{2^m (2^{n-m} - 1)}$$

x purely periodic ($m = 0$)

$$x = \frac{q - p}{2^n - 1}$$

$\boxed{\mathbb{Q}}$ is $\frac{3}{14}$ purely periodic
or eventually periodic.

$$\frac{3}{14} \rightarrow \frac{3}{7} \rightarrow \frac{6}{7} \rightarrow \frac{5}{7}$$

$x \in \mathbb{Q} \implies x$ periodic

$$\begin{aligned} x = \frac{p}{q} &\implies T^n(x) = \frac{2^n p}{q} + k = \\ &= \frac{2^n p + kq}{q} \end{aligned}$$

The orbit of x is contained in the finite set $\left\{ \frac{k}{q}, k \in \mathbb{Z} \right\}$.

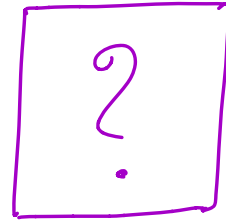
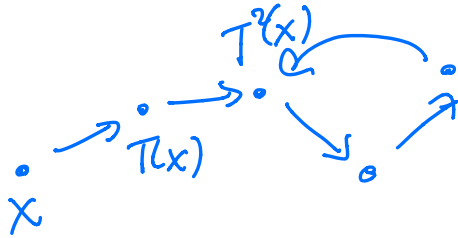
Fact A rational $x \in \mathbb{Q}$ is purely periodic for doubling map iff its denominator is ODD.

Proof x purely periodic

$$\text{then } x = \frac{k}{2^n - 1} \implies \text{den}(x) \text{ is odd since it divides } 2^n - 1$$

$$x = \frac{p}{q}, \quad q \text{ odd}$$

$\Rightarrow x$ purely periodic.



Cor.: ① periodic points are dense
② there are points with dense orbit

Q Example of $x \in [0, 1)$ with dense orbit for $T(x) = 2x \pmod{1}$?

$$x = .b_1 b_2 b_3 \dots b_n \dots \quad (\text{base } 2)$$

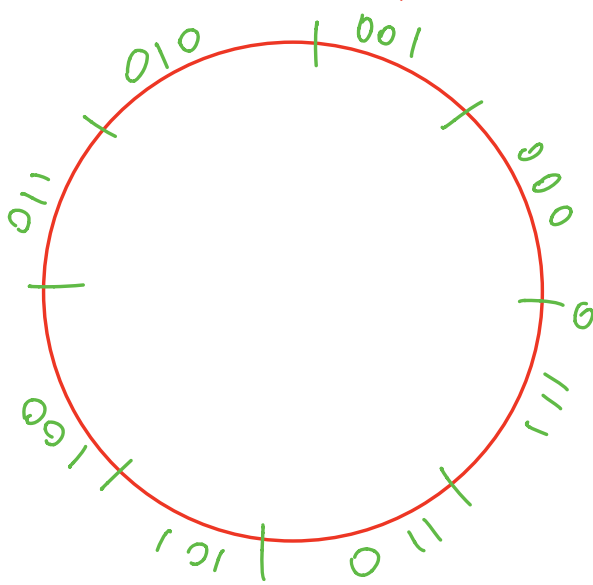
$$T(x) = .b_2 b_3 \dots b_n \dots$$

T acts as shift

$x = .010011000001\dots$

Given any finite sequence, there is n s.t. $T^n(x)$ starts with that sequence. \Rightarrow orbit is

DENSE



Def: T is TOPOLOGICALLY TRANSITIVE if there exists x with dense orbit. T is MINIMAL if EVERY point has dense orbit.

DOUBLING
MAP ; ① TOP. TRANSITIVE
(not MINIMAL)
② Periodic pts are
dense

It is an example of a
HYPERBOLIC / EXPANDING / CHAOTIC

IRRATIONAL
ROTATION ① MINIMAL

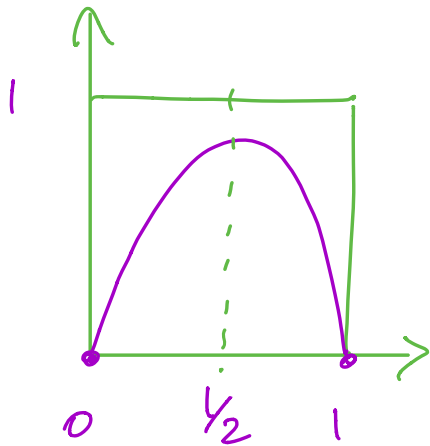
QUASIPERIODIC

DYNAMICS IN ONE REAL VARIABLE

$$g_a(x) = ax(1-x) = ax - ax^2$$

$a \in \mathbb{R}$ parameter

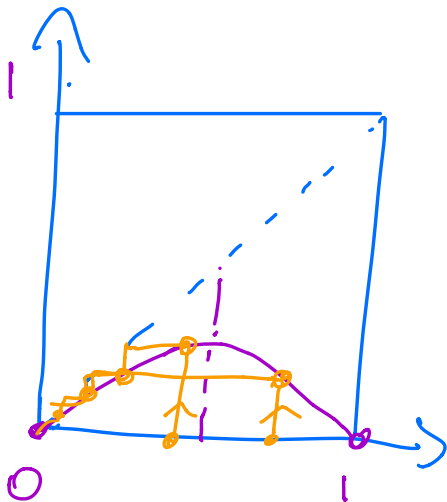
$$g_a: [0, 1] \rightarrow [0, 1]$$



$$g_a\left(\frac{1}{2}\right) \leq 1$$

$$a \cdot \frac{1}{2} \cdot \frac{1}{2} \leq 1$$

$$0 \leq a \leq 4$$



a small:

$$g_a^n(x) \rightarrow 0$$

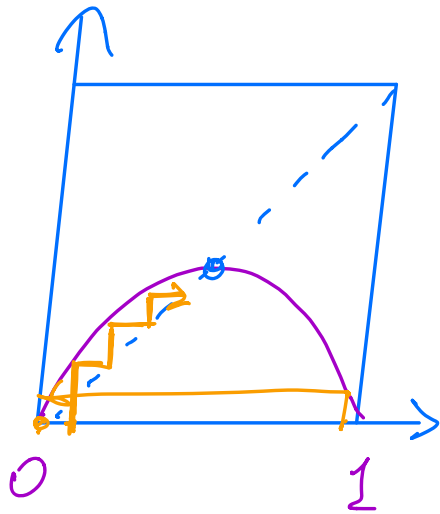
for any x

$$g'_2(0) \leq 1$$

$$g'_2(x) = a - 2xa$$

$$g'_2(0) = \underline{a} \leq 1$$

$$\underline{a = 2}$$



$$g_2\left(\frac{1}{2}\right) = \frac{2}{4}$$

$$g_2\left(\frac{1}{2}\right) = \frac{1}{2}$$

$$1 < a \leq 2$$

For every x ,

$g_a^n(x) \rightarrow x_0 \neq 0$
which is
an attracting
fixed point.

Def.: x is FIXED POINT if

$$T(x) = x.$$

x is an ATTRACTING F.P. if

$$|T'(x)| < 1$$

x is a REPELLING F.P. if

$$|T'(x)| > 1.$$

In the logistic family

$$g_d(x), \quad \text{for } d \leq 1, \quad g_d^n \rightarrow 0$$

$$1 + \varepsilon > d > 1, \quad g_d^n \rightarrow x_0 \neq 0$$

Def.: $d = 1$ is a BIFURCATION
PARAMETER

$$\begin{cases} g_d(x) = dx - dx^2 = x \\ g'_d(x) = d - 2dx \end{cases}$$

$$x \neq 0 \quad a - 2x = 1$$

$$x = \frac{a-1}{2}$$

$$g'_2(x) = a - 2 \cdot \frac{a-1}{2} =$$

$$= a - 2a + 2 = |2 - a| < 1$$

$$|2 - a| < 1 \Rightarrow \boxed{1 < a < 3}$$

For $1 < a < 3$, there
is a non-zero attracting
fixed point.

GOAL OF CLASS

- [1] Classification of all local dynamical behaviour for $f_c(z) = z^2 + c$
- [2] Describing combinatorially Julia & Mandelbrot set
- [3] Applications to Entropy.
- using entropies to classify complex polynomials